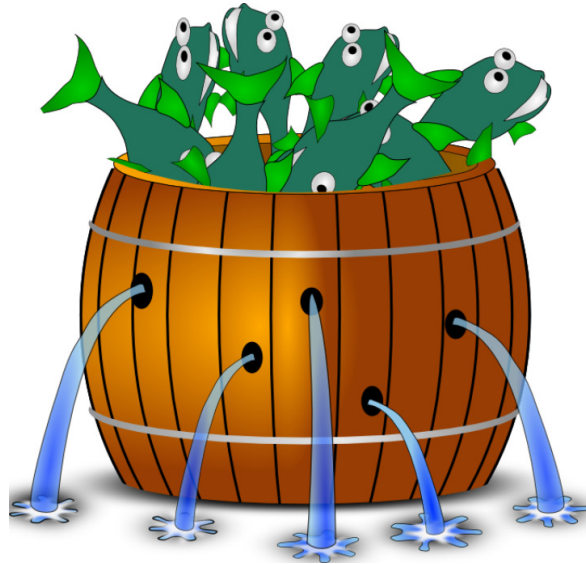


*Barrelfish Project  
ETH Zurich*



**Tracing and Visualisation**

*Barrelfish Technical Note 8*

Barrelfish project

28.02.2013

Systems Group  
Department of Computer Science  
ETH Zurich  
CAB F.79, Universitätstrasse 6, Zurich 8092, Switzerland  
<http://www.barrelfish.org/>

---

# Revision History

<b>Revision</b>	<b>Date</b>	<b>Author(s)</b>	<b>Description</b>
1.0	28.02.2013	Alexander Grest, David Stolz	Initial version

---

# Contents

<b>1</b>	<b>Overview</b>	<b>4</b>
<b>2</b>	<b>Design and Implementation of the Tracing Framework in Barrelfish</b>	<b>5</b>
2.1	Overview . . . . .	5
2.2	Definition of a Trace Event . . . . .	6
2.3	Pleco: A new Domain Specific Language . . . . .	7
2.3.1	Overview . . . . .	7
2.3.2	Interpreting Pleco Files . . . . .	8
2.3.3	The Generated Header File . . . . .	8
2.3.4	The Generated JSON File . . . . .	9
2.4	Feature Overview . . . . .	10
2.4.1	Preparing the Tracing Framework . . . . .	10
2.4.2	Enabling and Disabling of Events . . . . .	11
2.4.3	Automatic Flushing . . . . .	11
2.5	Bfscope . . . . .	12
<b>3</b>	<b>Design and Implementation of the Analysis Tool Aquarium</b>	<b>13</b>
3.1	Design of Aquarium . . . . .	13
3.1.1	Goals . . . . .	13
3.1.2	Architecture . . . . .	14
3.2	Extending Aquarium with Scripts . . . . .	15
3.2.1	Script Filters . . . . .	15
3.2.2	Script Activities . . . . .	16
3.3	Working with Aquarium . . . . .	17
<b>4</b>	<b>Usage</b>	<b>21</b>
4.1	Getting traces to Aquarium 2 over the network . . . . .	22
<b>5</b>	<b>Performance Analysis</b>	<b>23</b>
5.1	Introduction . . . . .	23
5.2	Memory Overhead . . . . .	23
5.3	Execution Time Overhead . . . . .	24
5.3.1	Cost to Trace a Single Event . . . . .	24
5.3.2	Cost to Flush . . . . .	24

---

# Chapter 1

## Overview

The tracing framework in Barrelfish consists of three major components:

- The tracing library.
- Bfscope (a Barrelfish program).
- Aquarium 2.

The tracing library can be used to instrument code in order to trace events. The events are stored core local and can later be flushed, either to console or – with the help of Bfscope – to a remote machine. On the remote machine you can analyze the trace data using Aquarium 2. Aquarium 2 can be customized with scripts, making it easy to integrate specific needs into the existing analysis framework. In addition it supports various export functionalities that allow you to analyze trace data with external tools in an easy fashion.

---

## Chapter 2

# Design and Implementation of the Tracing Framework in Barrelfish

### 2.1 Overview

The tracing framework inside of Barrelfish existed already before this project has been started. In order to break as little as possible in existing code to work with the tracing system (e.g. tools that have been developed analyzing trace logs) we decided to change as little as possible on the interface of the tracing framework. In the end the structure of the trace logs that are generated did not change, but only some mappings between constants in code and their interpretation.

In this section we want to look at the part of the tracing framework that is implemented in Barrelfish, i.e. the actual functionality that developers use in order to create trace logs. One part of the tracing framework allows developers to trace events at any point in the code, where the data that is actually stored is defined in the Section 2.2. The second part is responsible for delivering the generated trace logs to Aquarium. To achieve the second goal we changed the existing Barrelfish application Bfscope in such a way, that it integrates with the new version of the tracing framework. Bfscope is described in Section 2.5.

The typical lifecycle of using the tracing framework in Barrelfish looks like this:

- 0.a (Optional)** Prepare the tracing framework.
- 0.b (Optional)** Specify which Subsystems should be logged.
  1. Define the type of event that will trigger the start of tracing.
  2. *Execute your code, that will log the events.*
  3. Flush the logged events, e.g. on the console.

To get more information about the optional steps, see Sections 2.4.1 and 2.4.2. The first mandatory step is to define the type of the event that will start the logging process. Having a mechanism for starting and stopping the actual tracing may seem like a benefit, but not like a necessity at first – but our experiments have shown that even with rather small instrumentation of code (i.e. number of events that actually generate an entry in the trace log), having the tracing framework log events all the time is no option. Thus having the possibility to start and stop the tracing framework is essential. Having the flexibility of specifying a type of trace event

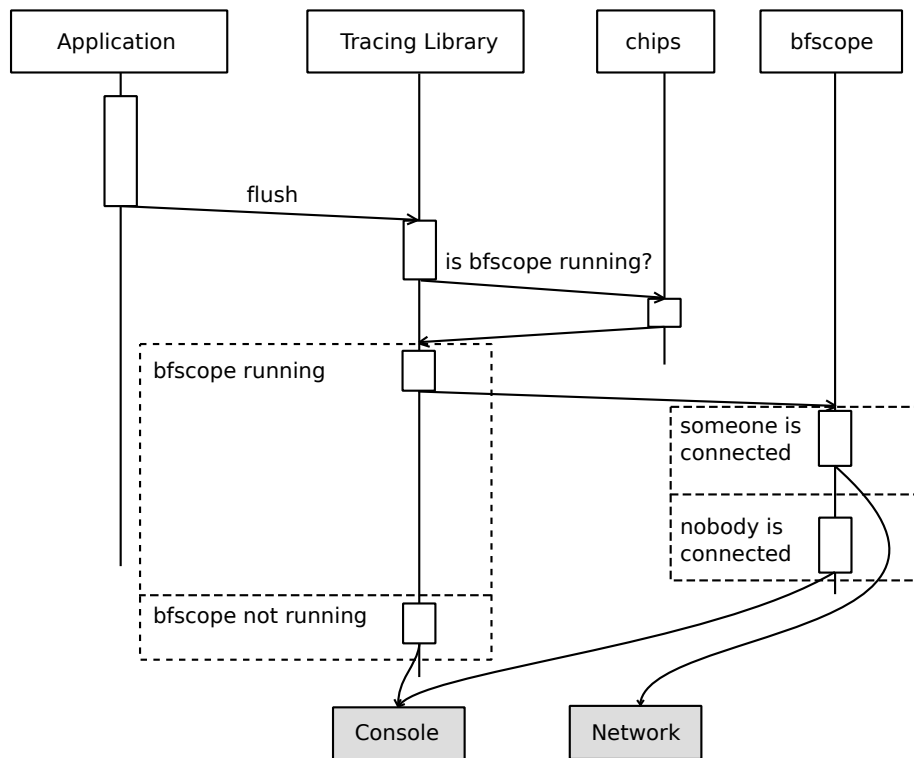


Figure 2.1: A sequence diagram illustrating the flow of events when using the flush functionality. “Application” is the application that is using the tracing framework, and chips is the Barrelfish nameserver. The grey boxes indicate the destination onto which is flushed.

that will trigger the start and stop of the logging is an additional benefit compared to having simple “start” and “stop” commands, as it allows developers to easily vary the portion of code they want to trace, without changing the placement of a “start” and “stop” command all the time.

While the second mandatory step is pretty self-explanatory, the third step is more interesting again: The old version of the tracing system allowed only for dumping the stored trace into a provided buffer. This functionality has now been improved in such a way that we offer developers a method to flush the current trace log, and the flush functionality automatically detects the best way to flush. Currently there are two possible destinations onto which can be flushed: The console and the network. The tracing framework detects automatically if Bfscope is running and someone is connected to it – if so, it flushes over the network – else it will flush to the console. The flushing functionality could also be extended, a possible idea would be to store the trace log in a file. In Figure 2.1 you can see a sequence diagram illustrating the process of invoking the new flushing functionality.

## 2.2 Definition of a Trace Event

Let us now define the structure of events that can be traced. Each event belongs to a Subsystem and an Event, and has an optional payload called Argument that can hold 32 bits of arbitrary information. Both the Subsystem and the Event are 16 bit identifiers, allowing us to have up to 65535 Subsystems and for each Subsystem 65535 Events. Note that the Events are relative

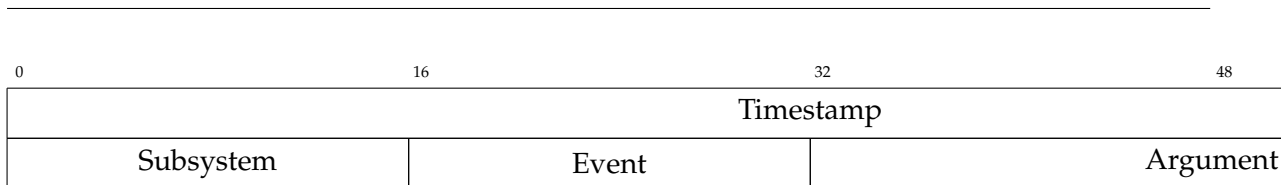


Figure 2.2: Representation of a single trace event in memory in Barrelfish.

to the Subsystems, i.e. a Subsystem called *kernel* might have the Event *Context Switch* with the identifier 0, but the same Event identifier 0 has an entirely different meaning in every other Subsystem.

Having all these different Subsystem and Event identifier available, we think that the tracing framework will have sufficient space to deal with future change in Barrelfish<sup>1</sup>.

In addition to the Subsystem, Event and Argument information, the tracing framework adds a timestamp to each event that gets logged (the timestamp is measured in CPU cycles) and remembers the core on which the event was logged. The core is only implicitly stored, as we have a separate tracing buffer on each core, allowing us to identify the core for an event at a later stage automatically, without storing it for each event.

As timestamps are stored as a 64 bit number, we need a total of 128 bits (respectively 16 bytes) per event that has been logged. The data structure layout of a single event can be seen in Figure 2.2.

## 2.3 Pleco: A new Domain Specific Language

### 2.3.1 Overview

As trace events are identified by the type of their Subsystem and Event (which is a two tier hierarchical structure), the best way to specify those Subsystems and Events is using a domain specific language. For this purpose we designed a new domain specific language called *pleco*, that resembles the domain specific language for error codes in Barrelfish (called *fugu*) a lot – due to the fact that it solves a very similar task.

Pleco allows programmer to easily add new Subsystems to the tracing framework and to extend existing Subsystems with new Events. Note that the Argument parameter of the trace events is not specified in Pleco, as this parameter is intended to be a payload, and not to be a means to distinguish different trace events. A small sample pleco file can be seen in Listing 2.1. In this file we define two Subsystems: *kernel* and *memserv*. Note that the keyword *subsystem* is used to define a new Subsystem. The Events for a Subsystem are defined in the block following its name. Events have both a name and a verbose description, following the keyword *event*. The textual description is *not used* in the tracing framework inside of Barrelfish, but Aquarium will use the textual description to display it when analyzing generated traces. Note that the textual description is not a strict requirement; if the empty string is provided, during the interpretation of the pleco file, the name of the event will be substituted for the textual description.

<sup>1</sup>Currently there exist 16 different Subsystems.

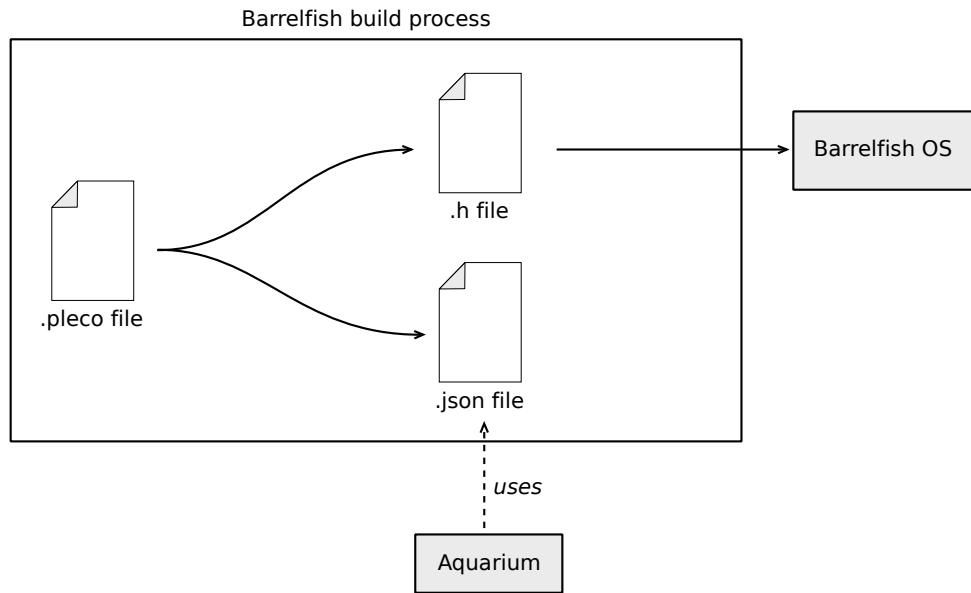


Figure 2.3: Pleco files get translated into both a C header file and a JSON file. This translation is taking place during the regular build process of Barrelfish.

```

subsystem kernel {
    event CSWITCH          "Context_Switch",
    event BZERO            "Buffer_zeroing",
    event TIMER            "",
    event TIMER_SYNC      "",
};

subsystem memserv {
    event ALLOC            "",
};

```

Listing 2.1: A small example pleco file with two Subsystems.

### 2.3.2 Interpreting Pleco Files

Parsing and interpreting of pleco files is part of the Barrelfish build process, meaning that the according tools are written in Haskell and are integrated into the Hake build process. An overview of how pleco files are integrated into the Barrelfish toolchain can be seen in Figure 2.3. Note that the header file that is created during the build process is directly used in the very same build process, i.e. it is just an intermediate file.

### 2.3.3 The Generated Header File

For the pleco file of Listing 2.1, the header file shown in Listing 2.2 has been generated during the build process. In Barrelfish source code, this file can be included with the statement:



---

```
#include <trace_definitions/trace_defs.h>
```

Note that the macro that are created for events also contain the subsystem name, so that there will not be any name collisions when two different subsystem define an Event with the same name.

The generated numbers are not randomized. The reason for this is not that people can avoid using macros, but rather for a new feature that has been introduced into the tracing framework to work: enabling and disabling of Subsystems that are logged. See Section 2.4.2 for detailed information.

```
#ifndef TRACE_DEFS_BARRELFISH__
#define TRACE_DEFS_BARRELFISH__

#define TRACE_SUBSYS_KERNEL 0
#define TRACE_EVENT_KERNEL_CSWITCH 0
#define TRACE_EVENT_KERNEL_BZERO 1
#define TRACE_EVENT_KERNEL_TIMER 2
#define TRACE_EVENT_KERNEL_TIMER_SYNC 3

#define TRACE_SUBSYS_MEMSERV 1
#define TRACE_EVENT_MEMSERV_ALLOC 0

#define TRACE_NUM_SUBSYSTEMS 2

#endif // TRACE_DEFS_BARRELFISH__
```

Listing 2.2: A header file that has been generated based on the pleco file shown in Listing 2.1.

### 2.3.4 The Generated JSON File

As the pleco file shown in Listing 2.1 does not only get translated into a header file, but also into a JSON file, we want to have a look at this file now. The JSON file that has been generated for said pleco file can be seen in Listing 2.3.

```

{
0 : {
  "name" : "kernel",
  "events" : {
    0 : "Context_Switch",
    1 : "Buffer_zeroing",
    2 : "TIMER",
    3 : "TIMER_SYNC"
  }
},
1 : {
  "name" : "memserv",
  "events" : {
    0 : "ALLOC"
  }
}
}

```

Listing 2.3: A JSON file that has been generated based on the pleco file shown in Listing 2.1. This file can be used by Aquarium to decode log traces.

As you can see, the textual description in the pleco file was used where provided, and where it wasn't, the name of the Event has been used as a substitution. The generated numbers are the same as the ones in the header file. This is no coincidence, as the usage of this JSON file is exactly to decode the numbers from the trace logs into human readable events again.

For the purpose of decoding the events, the old version of Aquarium had the mapping from numbers to human readable events directly hard coded into the source code. This new way of defining Subsystems and Events in pleco files allows programmers to omit duplicate work (and having to check that both programs are always consistent), and provides them with an automated way of having a consistent tracing framework and analysis tool.

## 2.4 Feature Overview

### 2.4.1 Preparing the Tracing Framework

The tracing framework does not strictly need any extra preparation, nevertheless depending on the environment, a preparation might be necessary. For this reason we added the functionality to prepare the tracing framework. Currently the preparation process estimates the offset between the CPU cycle counters on the different cores. This functionality is not needed on machines that have synchronized cycle counters, but in the future it might be possible to run a single instance of Barrelfish on multiple machines, and in this case the different cycle counters will not be synchronized anymore.

The cycle counter offsets are all measured relative to core 0. To measure the offset between a core  $i$  and core 0, we execute the Network Time Protocol clock synchronization algorithm between the two cores. Figure 2.4 illustrates the steps of the clock synchronization between two cores. Four time measurements are performed and the estimated offset  $\theta$  between the two cores is calculated as follows:

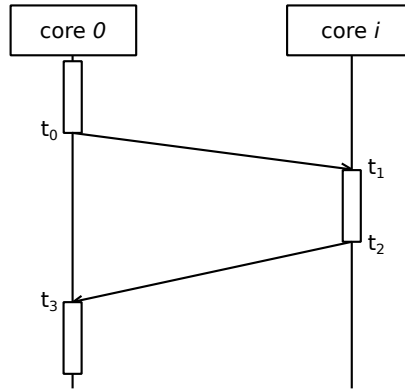


Figure 2.4: NTP clock synchronization. Four time measurements  $t_0$  to  $t_3$  are performed.

$$\theta = \frac{(t_1 - t_0) + (t_2 - t_3)}{2} \quad (2.1)$$

The tracing framework performs measurements between every core  $i$  ( $i > 0$ ) and core 0 sequentially, so that the measurements are as precise as possible. The messages needed to perform those measurements are sent using the monitor, meaning that the tracing framework does not need to setup any new channel.

## 2.4.2 Enabling and Disabling of Events

With the new version of Aquarium it is possible to filter out events in the analysis for a given trace log. But it showed that this functionality is not sufficient, as there are use cases where applications log so many events, that filtering must already be performed on the fly, i.e. already during the tracing process itself. An application where this is currently necessary in Barrelfish is the tracing of the network stack. The current way of achieving this filtering is introducing preprocessor statements at different locations in the code. Having the new domain specific language available, we implemented a mechanism to enable and disable Subsystems directly at runtime, using the Subsystem identifier generated from the pleco file.

It is now possible to change which Subsystems are logged directly at runtime, removing the need of recompiling the entire tracing framework just because the type of events that a developer is interested changed. With the hierarchical structure of Subsystems and Events it was possible to implement this enabling facility in a lightweight manner, as the number of Subsystems is quite small.

## 2.4.3 Automatic Flushing

The flush procedure described in Section 2.1 can be triggered by manually calling the according trace framework function. In addition to the manually triggered flushing, we added a new functionality, namely the one that the trace buffer is flushed automatically. This functionality is implemented with in Bfscope, as we think the main use-case for automatic flushing is when

---

the generated logs are automatically forwarded to a remote machine<sup>2</sup>. When a developer decides to enable the automatic flushing and Bfscope is running, Bfscope will automatically flush the content of the trace buffers periodically. This feature removes the need of having to call the flush procedure manually, but it developers should note that if timing is critical for your application, the automatic flushing functionality can lead to issues. The issues that can arise come from the fact that it is possible that Bfscope flushes in the middle of your application executing its code – this does not lead to a problem of correctness, but it can heavily skew the flow of events in the Barrelfish as a whole.

## 2.5 Bfscope

Bfscope is a Barrelfish program that enhances the functionality of the tracing framework by the possibility to directly flush trace logs over the network. Note that the tracing in the Barrelfish code itself runs independently of Bfscope – and it even notices when Bfscope is running and changes its behavior accordingly. Bfscope allows developers to connect from a remote machine to the Barrelfish OS, using a TCP connection and to get the trace logs directly onto the remote machine. Note that when a remote machine is connected, regular flush commands in Barrelfish will automatically be redirected onto the network, and you will not see the trace logs on the console any longer.

As the remote machine is merely a utility that wants to get the trace log data, there are no messages exchanged as part of a protocol – Bfscope simply sends the trace log data onto the TCP connection, once the flush command is issued (or periodically if automatic flushing is enabled). This has, beneath being a simple protocol, the additional benefit that it is no longer necessary to run Aquarium in order to be able to get the trace log onto a remote machine, but you rather can use any tool that allows you to open a TCP connection, such as netcat. Using such a tool will allow you to get the trace log data on a different machine, where you can either later analyze it with Aquarium, or with custom scripts.

Nevertheless the main intention is to directly connect to Bfscope using Aquarium, which can interpret and visualize the trace log data directly on the fly.

---

<sup>2</sup>Having the console cluttered with events from the tracing framework can render the application unusable rather quickly.

---

## Chapter 3

# Design and Implementation of the Analysis Tool Aquarium

### 3.1 Design of Aquarium

#### 3.1.1 Goals

When we designed Aquarium we had several goals in mind, namely the following ones:

1. Support for live tracing.
2. Support for different ways of input (e.g. reading from file or receiving data over the network).
3. Being able to handle large trace log data.
4. Being extensible and easily customizable.
5. Aquarium must run on different operating systems.

We decided to tackle the first three goals with the design of the architecture of Aquarium, which we will discuss in Section 3.1.2. The fourth goal also did influence the architecture on one hand, but also led to the idea of making Aquarium scriptable, i.e. to create an interface that allows developers to add their own scripts to Aquarium. Since those scripts do not work on the raw trace log data, but rather on already from Aquarium interpreted data, it offers developers on one hand a more powerful means to write scripts in a very easy way, and on the other hand the scripts are directly integrated into the visualization of Aquarium, alleviating the need to write visualization code for custom developer scripts. In Section 3.2 we will discuss the different ways how Aquarium can be extended with scripts.

The fifth goal, i.e. the goal that people should be able to run Aquarium on different Operating Systems, such as Linux and Windows, arose from a shortcoming in the old version of Aquarium – namely that it was written in C# and only runs on Windows. To tackle this requirement we decided to implement our version of Aquarium in Java, so that cross platform portability will certainly not become an issue.

---

### 3.1.2 Architecture

When you analyze trace log data with Aquarium, the main object is a `TracingSession` object. Each trace log data is at runtime represented by exactly one `TracingSession` object. Figure 3.1 shows the most important classes that are dealing with getting from trace log data to the according `TracingSession`. A `TracingSession` is associated with a single event provider, currently there are two different input ways implemented:

- Reading trace log data from a file, using a `LogfileReader`.
- Reading trace log data directly from a Barrelfish machine, using a `NetworkReader`.

The actual interpretation of the trace log data is done using an `EventParser`; `EventParser` objects are independent of the type of data source. Note that the `EventConfiguration` is the responsible for interpreting the JSON file that has been generated during the build process of Barrelfish, based on the `pleco` file.

The trace log data gets interpreted to `Events` and `Activities`, that are stored in the `TracingSession` object. Note that the flow of data is push based, i.e. it is the data source that actively creates new `Events` as soon as more data is available, and pushes the `Events` to the `TracingSession`. Having an active data source allows us to treat different types of data sources uniformly.

While `Events` are quite self explanatory, i.e. they are the Aquarium representation of the actual events in the trace log data, `Activities` are a new concept that we introduced in Aquarium. An `Activity` is a sequence of `Events`, that are grouped into a single activity. `Activities` are a typical constructs that are needed when analyzing trace log data; an example for that is when analyzing the network stack, the fact that memory has been allocated (a single event) might not be very interesting, but the duration of the entire construction of the packet (an `Activity`) is what is actually very interesting. Thinking about `Activities`, it becomes immediately clear that the different types of `Activities` must be flexibly definable. We achieved this by allowing developers to create their own scripts that decode `Activities`.

Let us now look at how events are processed once the `TracingSession` retrieves a new `Event`. A class diagram illustrating the handling of `Events` and `Activities` can be seen in Figure 3.2. A `TracingSession` stores both a list with the `Events` that have been extracted from the trace log data, as a list with all the `activities` that have been created based on those events. Once an `Event` is received by the `TracingSession`, it notifies all registered `EventHandlers` to handle the new `Event`. Such `EventHandlers` can either be UI elements, such as an `EventListUpdateHandler` (an object being responsible to present a list of all interpreted `Events` in the UI), or an `ActivityDecoder`. `ActivityDecoders` are objects that create `Activities`, and one possibility for that is, as already mentioned, to have external scripts which decode `Activities`. If an `ActivityDecoder` creates a new `Activity`, this `Activity` will be added to the `TracingSession` and all registered `ActivityHandlers` will receive it. As you can see, the only module that is currently both receiving `Events` and `Activities` is the `GraphViewUpdateHandler`, an object that is responsible for visualizing the trace log data graphically.

When developing Aquarium, we initially planned to add a statistics module as well. Due to a lack of time, we had to omit it in the end. Nevertheless from the design it can be seen, that such a module could easily be added to Aquarium: It would simply have to be an `EventHandler` and an `ActivityHandler`. Note that the design with having the `TracingSession` at the core, we achieved that all handler classes are always in a consistent state. For example if an activity is seen by one handler, it is always also seen by all other handlers. This becomes especially handy

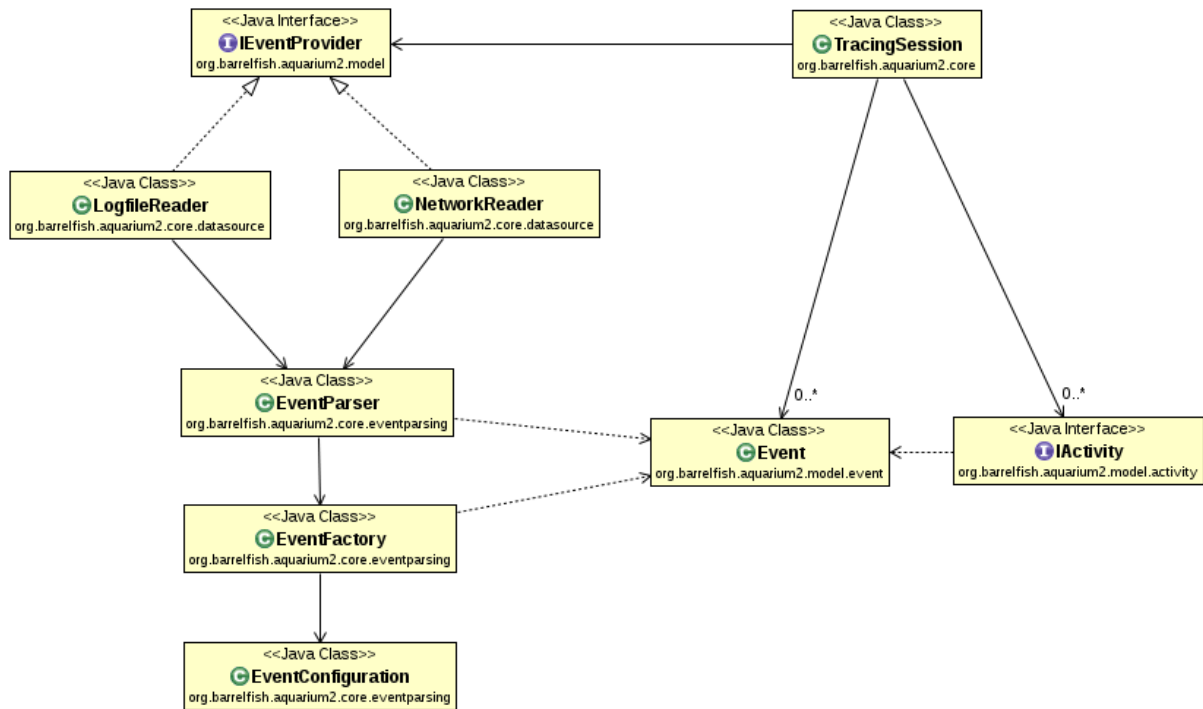


Figure 3.1: UML class diagram showing the main classes that are concerned with dealing with input.

when considering the filtering functionality of Aquarium. In Aquarium we added the functionality to filter out Events based on various different criteria, ranging from the core on which the Event happened, over the Subsystem type up to custom scripts that developers can write to create their own filter. When a filter is applied, it is always applied on the TracingSession, and not on e.g. a UI element. With this globally applied filtering mechanism a new Handler that is created to extend Aquarium would immediately benefit from the filtering functionality, without having to take care of it at all.

## 3.2 Extending Aquarium with Scripts

As mentioned in Section 3.1.2, it is possible to extend the functionality of Aquarium by adding custom scripts. The scripts are interpreted using the Java Scripting API, and currently JavaScript is the language for which support in Aquarium has been implemented. Based on the Java Scripting API support for other languages could be added.

### 3.2.1 Script Filters

Script filters are custom scripts that can be written by developers to filter out events in which they are not interested. Aquarium itself already provides the possibility to filter out events based on the following criteria:

- Filter out entire cores (e.g. filter out core 1).

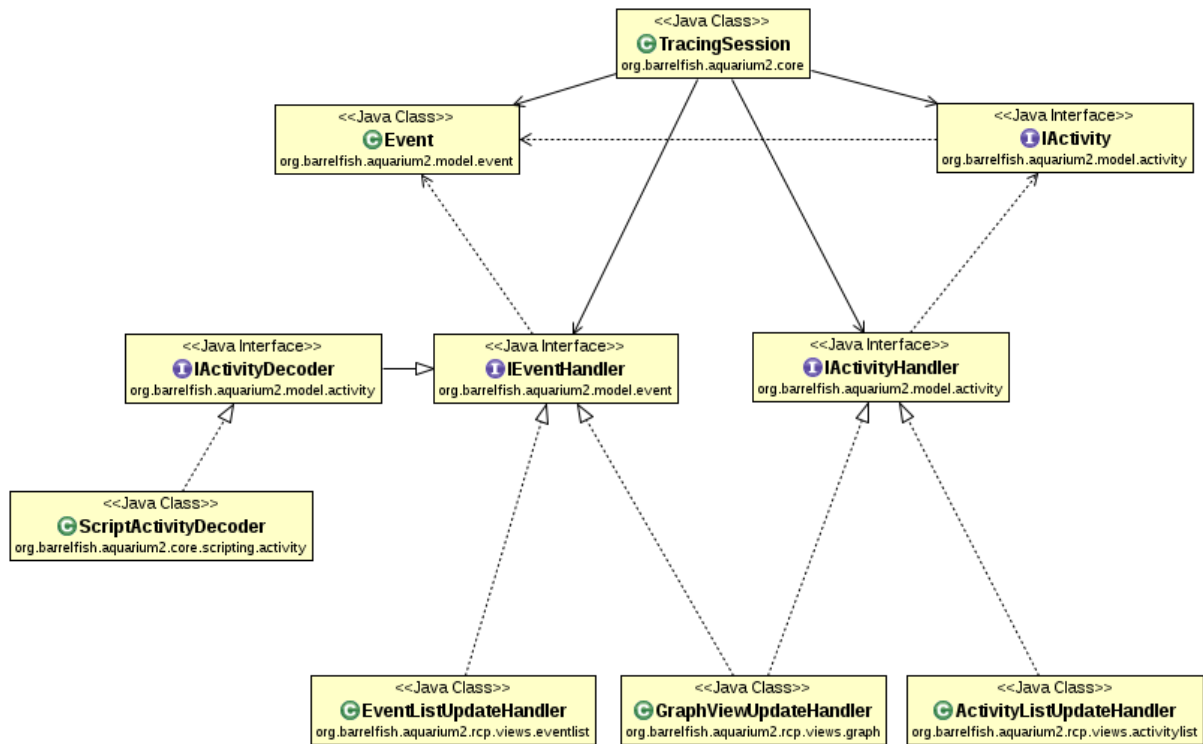


Figure 3.2: UML class diagram showing the main classes that are concerned with handling events and activities.

- Filter out entire Subsystems (e.g. filter out the *kernel* Subsystem).
- Filter out Events from a Subsystem (e.g. filter out *ALLOC* Events from the Subsystem *memserv*).
- Filter out trace events based on their application (e.g. filter out all events that the application *monitor* logged).

If a user is not satisfied with these possibilities to filter out events, Aquarium can be extended with script filters. An example for a script filter would be to filter out all events, except those that are an *ALLOC* Event initiated by the monitor. Such scripts allow users to quickly spot specific events, even when they are analyzing large trace logs.

### 3.2.2 Script Activities

Another possibility to extend Aquarium with the help of scripts is to write custom activity scripts. Such a script works in the following way: It receives all events that exist in the trace log, in the order they exist in the trace log itself, and based on these events it can create activities, and deliver them to Aquarium. In Figure 3.2 we can see that such a Script is wrapped in a *ScriptActivityDecoder* inside of Aquarium, which is – as just described – an *EventHandler*.

An example for an activity script could be to create an activity for all the *MUTEX.LOCK* and *MUTEX.UNLOCK* pairs – in order to analyze the locking behaviour. For each activity, certain parameters such as the duration of each activity, is automatically calculated by Aquarium.



---

### 3.3 Working with Aquarium

In this section we briefly want to look at how some of the already described functionality looks in Aquarium with the help of some examples. Figure 3.3 shows a screenshot displaying a single trace log data file opened in Aquarium. The largest part of the GUI is used by the so called *GraphView*, presenting the information contained in the log in a two dimensional manner. From left to right we see the timestamps (measured in clock cycles), and on the vertical axis we see the different cores.

For each core we show the actual events that have been traced, indicated using black circles on the bar of the core. The color of the bar shows which application was running on the core on that time, where the colors are shown as well in the left menu labeled *Filter*. In addition to the per core events, arrows are drawn where messages have been sent between the cores, indicating the send and receive event. As the messages have the potential to clutter up the GUI quite a bit, the arrows can be hidden easily using the envelope button on the right top corner.

Below the *GraphView* we see a list representation of the event data. With the help of the *sync* button (shown on the right top corner of the list), the *GraphView* and the list can be linked, meaning that if you select an event in either of the two, the other view scrolls to that event. Using this functionality coarse navigation can be done using the *GraphView*, to then allow for detailed analysis by quickly looking at the list.

On the left part of the GUI we see the *Filter* menu. It allows to filter out events based on the different criteria, as already described. Scripts can be added using the *Scripts* tab, and afterwards they will directly appear in the *Filter* menu as well.

As we can see in the screenshot shown in Figure 3.4, for all the objects in the *GraphView* exist tooltips, when you hover over the according object with the mouse cursor. On this screenshot you can see that two custom script activities have been added, and they have already been evaluated. The created activities are integrated into the *GraphView* (on a per core basis) as well as in the *Activity* tab next to the *Events* list on the bottom of a *Aquarium*. All created activities can also be seen in a list fashion there.

In Figure 3.5 we activated several filters, thus compared to what we saw in Figure 3.4, the information displayed in *Aquarium* has been reduced. We filtered out several things:

- The entire core 0.
- The Event `MUTEX_UNLOCK`.
- The Subsystems for sending and receiving messages, hence the message arrows are filtered as a consequence as well.
- Events belonging to the application `spawnd`.

You can see that using the filter mechanism, it is possible to quickly find the part of the trace log data, that is interesting to you.

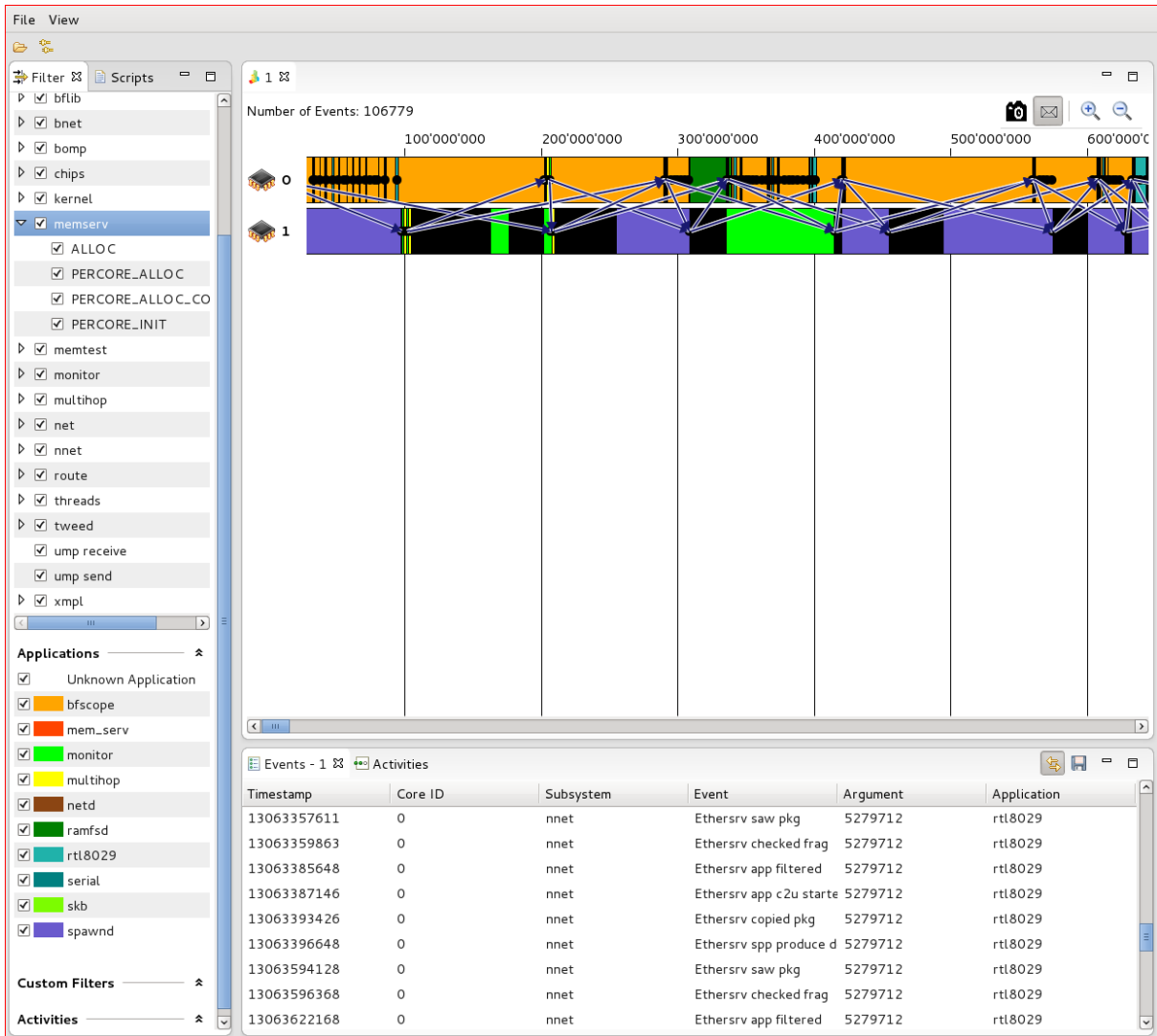


Figure 3.3: Screenshot of Aquarium displaying one trace log file.

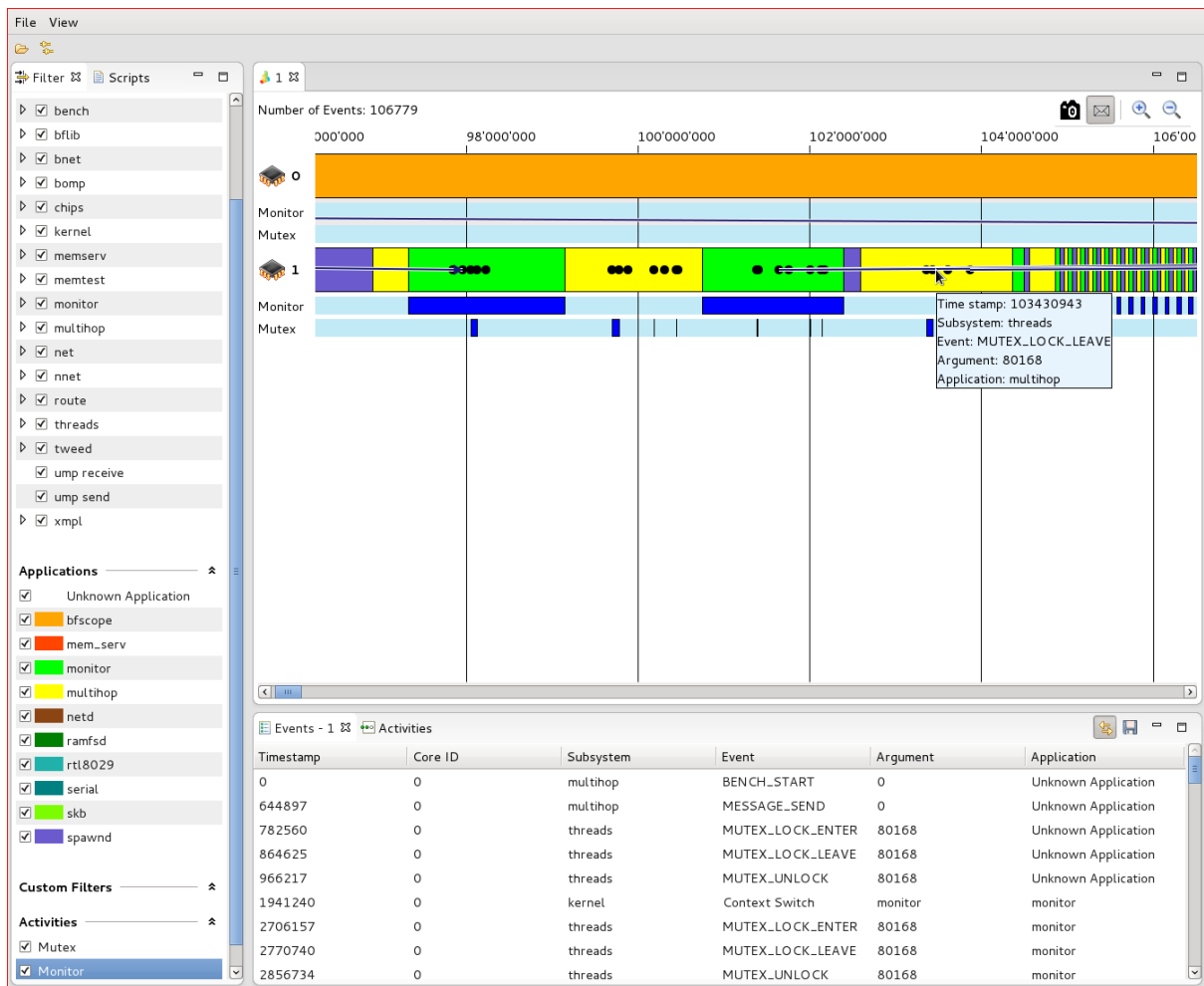


Figure 3.4: Screenshot of Aquarium displaying two script activities, one for mutex activities and one for the monitor application.

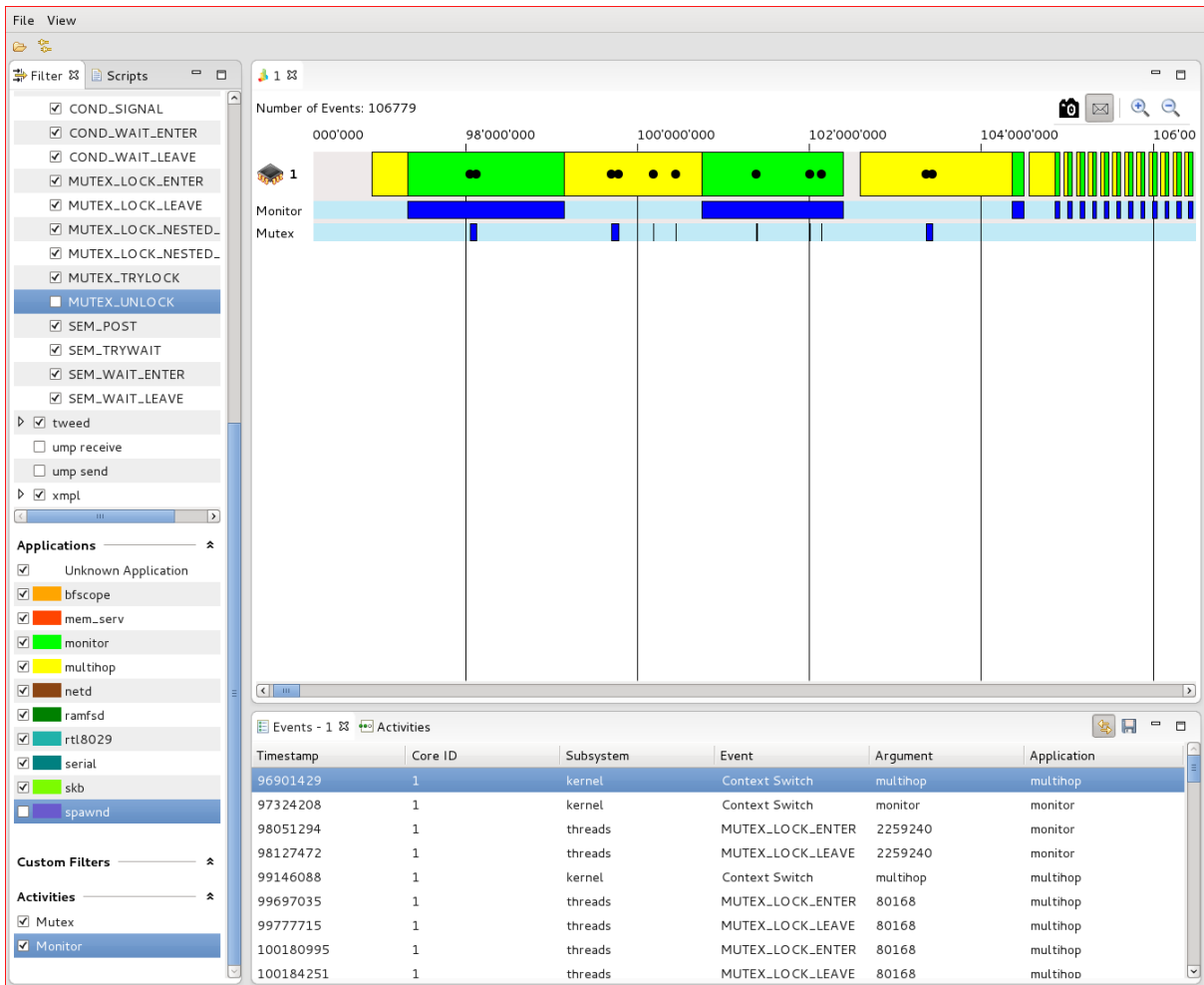


Figure 3.5: Screenshot of Aquarium where core 0 is filtered out, as well as certain events and applications.

---

## Chapter 4

# Usage

This chapter describes how to use the Tracing framework in Barrelfish.

- Add trace events to `trace_definitions/trace_defs.pleco`
- Enable tracing in `hake/Config.hs`
- Add `addLibraries = [ 'trace' ]`, to your Hakefile
- Modify the source code of your programs as described in Listing 4.1
- Download and compile Aquarium2 as described in the README as part of the source code

```

#include <trace/trace.h>

int main(..) {

    // initialize the trace framework
    trace_reset_all();
    trace_prepare(..); // do clock synchronization

    // tell the framework when to start recording
    err = trace_control(TRACE_EVENT(TRACE_SUBSYS_<A>,
                                   TRACE_EVENT_<START>,
                                   arg),
                       TRACE_EVENT(TRACE_SUBSYS_<B>,
                                   TRACE_EVENT_<END>,
                                   arg),
                       _duration);

    // enable the subsystems that should be traced
    trace_set_subsys_enabled(TRACE_SUBSYS_XXX, true);
    // or activate for all:
    trace_set_all_subsys_enabled(true);

    // fire the event that triggers start of recording
    trace_event(TRACE_SUBSYS_XXX, TRACE_EVENT_XXX_AAA, _payload);

    execute_something_useful();

    // fire the event that triggers end of recording
    trace_event(TRACE_SUBSYS_XXX, TRACE_EVENT_XXX_BBB, _payload);

    // Flush the buffer
    trace_flush(MKCLOSURE(..));
}

```

Listing 4.1: Enable tracing for an application

## 4.1 Getting traces to Aquarium 2 over the network

Assuming you have network hardware that works with Barrelfish you can also connect Aquarium 2 directly to the tracing infrastructure inside Barrelfish. The current default port for that is 6666. If your Barrelfish and Aquarium 2 machines are on the same subnet you can just connect to the Barrelfish machine's IP or host name from Aquarium 2. Otherwise, if you have ssh access to a machine that can talk to the Barrelfish machines you can use ssh port-forwarding to connect Aquarium 2 to Barrelfish directly using the ssh invocation below.

```
ssh -L 6666:<IP of Barrelfish machine>:6666 <ssh-machine>
```

---

## Chapter 5

# Performance Analysis

### 5.1 Introduction

This chapter analyzes the performance of the tracing framework only inside of Barrelfish. The analysis tool Aquarium is not analyzed for its performance, as it is intended to run “*offline*” in the sense that if it is fast enough to consume the data on live mode from a Barrelfish machine, it is considered to be fast enough. The impact on performance is also a lot bigger on the tracing inside of Barrelfish; This stems from the fact that if you do not want to analyze trace data, you simply do not start Aquarium, and if you want to analyze data, you are willing to wait until the analysis is performed. Looking at the tracing framework in Barrelfish, it is on one hand less easy to disable – once compiled into the system, a certain overhead will exist – and on the other hand it is important that the tracing does not affect measured code too heavily, or it will become useless.

### 5.2 Memory Overhead

The memory overhead for buffers inside the tracing framework is constant during the entire runtime of Barrelfish, as the only used buffers are allocated at startup of the system. The used buffer space currently consists of two main parts that exist for each core:

**Application Buffer** Up to 128 currently running applications can be stored per core.

**Event Buffer** Up to 8000 Events can be stored per core, where ringbuffer containing these events is cleared during a flush process.

To store an event or an application 16 bytes are used. As the tracing framework works independently of the actual number of cores, the number of cores is bounded assuming a limit of 64 cores. This leads to the following memory usage:

$$M = (128 + 8000) * 16B * 64 = 8323072 \approx 8MB \quad (5.1)$$

In addition to those buffers, a handful of pointers are stored, which in total use less than 1 KB of memory. Therefore that the total amount of memory that the tracing framework uses is 8 MB, which does not vary over time.

---

## 5.3 Execution Time Overhead

### 5.3.1 Cost to Trace a Single Event

We benchmarked the number of cycles that it takes to trace a single event in the tracing framework. We tested both the case where the Subsystem is enabled, i.e. we are interested in the event for which the `trace_event` function is called, and the case where we are not interested in the event that is traced, i.e. the Subsystem is disabled. The “*enabled*” case is straightforward to benchmark, but we also think the “*disabled*” case is interesting, as it might be often the case that code is instrumented with a lot `trace_event` calls, even though you are currently not interested in analyzing this part of the code. Since we added the functionality to dynamically disable the appropriate Subsystems, it is also important to know by what degree the execution of the code will be slower, compared to removing the statement from the actual code.

The results of the benchmark can be seen in Figure 5.1. The benchmark shows that on the machine `nos5`, the average number of cycles that it takes to trace an event, when the Subsystem is enabled is 40.384. The average number of cycles for a call, when the Subsystem is disabled is 9.950.

It can be seen that both benchmarks returned very stable results - there are a few outliers, but the vast majority of the events are closely around the average. Both benchmarks have been run twice with 1000 measurements each run.

### 5.3.2 Cost to Flush

The cost to flush the collected trace data can vary a lot depending on the destination onto which is flushed: Directly on the console, using `Bfscope` to send it over the network, etc. As the tracing framework is not intended to be used in a way where flushing is performed during a measurement, but afterwards, we did not do measurements for the different flushing methods. We only want to mention that flushing, especially over the network, is not to be considered a lightweight operation that can be done at any time during your code, without potentially affecting the outcome of the tracing heavily.



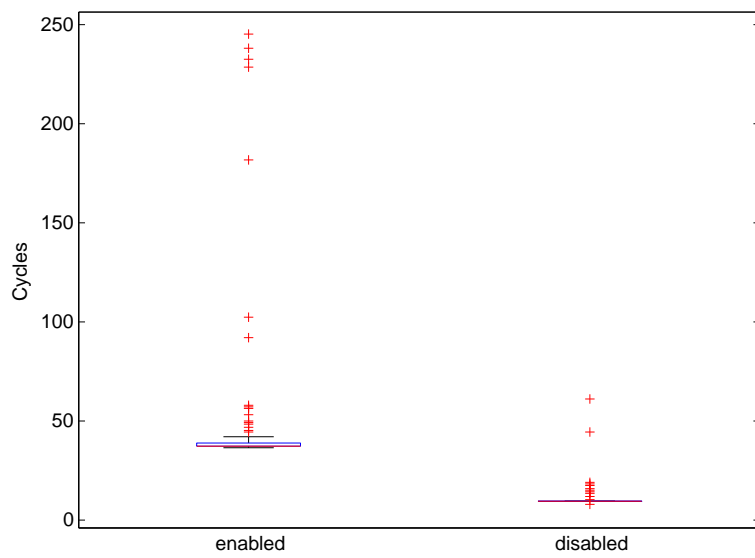


Figure 5.1: Boxplots showing the number of cycles that it takes to trace a single event. On the left: The Subsystem is enabled, i.e. the event is stored in the buffer. On the right: The Subsystem is disabled, i.e. the event is not stored in the buffer.